



Mark and Laura Woodward, October 2011

Dear praying friends,

Having been based in Oregon for the past year we are now getting ready to move to Tanzania in January for an initial period of around 6-9 months, to begin the next phase of our work with Wycliffe Bible Translators. We really appreciate all that you do to support us and our work, and are excited to share with you a bit of what we think the next few months may hold...

We are expecting to leave the US at the beginning of January, spending a week or so in the UK visiting friends, family and our supporting churches. From there we'll fly on to Tanzania in time for a three-week orientation course for new staff. Although Mark lived in Tanzania for three years, he never actually went through an orientation course, so this should be a useful time for both of us!

Next we will spend a few weeks at a language school just outside the town of Iringa, where Laura will learn some Swahili and Mark will try to refresh his memory after 5 years of only speaking English...! This is an important time for both of us, and will be foundational for everything else we do as Swahili proficiency is crucial for interacting with people around the country.

After that we plan to move to our longer-term location, the town of Mpanda in Katavi Region of western Tanzania. This is a two-day drive from the main city, Dar es Salaam, and is one of the most remote parts of the country.

Several of our colleagues are currently in the process of finding houses and moving to Mpanda, so we are hoping to join them as they work with the local church leaders to start the work of Bible translation into several languages in the region.

Once we arrive, Mark will be serving the team practically by helping to set up and run an office for the project, organizing workshops for translators from the various language groups, and providing a good work environment for the group of Tanzanians, Americans and Europeans.

Laura will be primarily focusing on learning Swahili for the first few months that we are in the country, but ultimately she will use her background in psychology and family studies to come alongside cross-cultural missionaries, helping them to adapt and thrive in what can often be a new and very challenging environment.

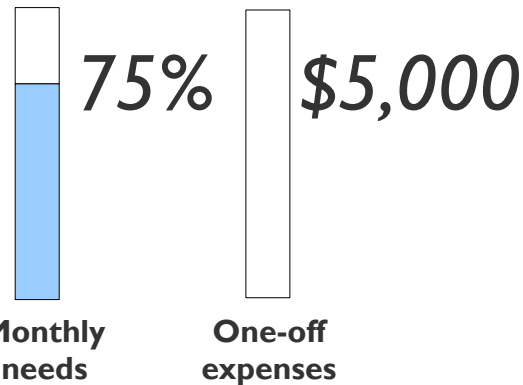


We've enjoyed being in our own apartment the last couple of months and being able to hang out more with friends. Mark especially enjoyed taking part in the 216-mile Cascade Lakes team relay run!



As we prepare to hopefully leave in January we are aware of the importance of having a committed team of people to support us financially and also in prayer. We are extremely grateful for all of our current supporters, who have faithfully provided for our needs over the past few years – thank you so much! Our present level of financial support would cover around 75% of our regular financial needs for next year, so we are praying for provision of the extra 25%, along with one-off costs such as flights and Tanzania work permit fees.

If you would like to help make our work in Tanzania possible by praying for us or by contributing to our financial needs we would be extremely grateful. Details on how to support us are given below, or else feel free to contact us for an information pack or go to www.everytongue.co.uk/support to see more.



Katavi Region of western Tanzania is home to various ethnic groups, speaking a number of languages. Initially the project will be working with the Tongwe, Bende, Pimbwe and Rungwa peoples, helping them to begin translating parts of the Bible into their languages for the first time.

While the Bible has been translated into Swahili, the national language of Tanzania, many people particularly in rural areas have low levels of proficiency in Swahili. At present very few local languages have any parts of the Bible translated, but various organizations including SIL (the organization we'll be working with) are currently working with communities to produce Scriptures in around 40 languages.



Katavi Region

Regional capital: Mpanda

Main ethnic groups:

Bende, Tongwe, Pimbwe, Rungwa

Economy: Mainly subsistence farming

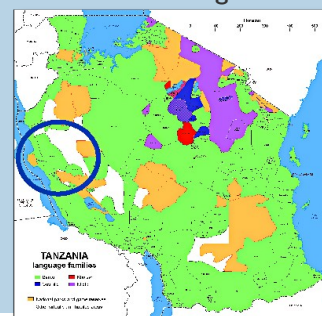
Tanzania Country Profile

Population: 43 million

National language: Swahili

Local languages: Around 120

Religious affiliation: Mix of Christian, Muslim and traditional religion



We would certainly appreciate your prayers as we move forward in faith over the coming months, planning various practicalities. We need to purchase flights at some point, as well as doing all we can to ensure that Mark's US residency doesn't expire when we leave the country. We'll also be applying for Tanzanian residency, and then preparing to pack our suitcases again in December! At the same time we'll both be continuing with our studies, and are looking forward to sharing at our supporting churches here in the US in the next few weeks – in Salem, OR on October 30th and Petaluma, CA on November 6th.

As well as the practical things we'll be doing, we will be sad to say goodbye to family and old and new friends that we have enjoyed spending time with over the past year! We are very blessed to have such great friends, but saying goodbye is undoubtedly one of the hardest things for us as we get ready to transition again.

Thank you so much for all that you do to support us, and ultimately to play a part in communities translating the Bible into their own languages for the first time. We pray that you would be encouraged and blessed, knowing that you have an important role in what God is doing through Bible translation around the world! Thank you!



Cut along here to remember to pray for us!

Mark and Laura Woodward

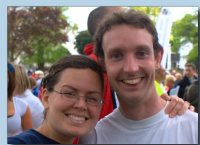
Checks can be made payable to "Wycliffe Bible Translators" and sent to:

Wycliffe Bible Translators, P.O. Box 628200, Orlando, FL 32862-8200

With a separate note "For Mark and Laura Woodward, a/c 214993"

Online and other donation options:

www.wycliffe.org/supportteam



Thank God that:

We are coming to the end of our studies, and still very much enjoying what we are learning

Plans to move to Tanzania are gradually coming together

Our new apartment has worked out very well

Friends and supporters have been so generous in meeting our needs

Pray for:

Church leaders and colleagues in Katavi, Tanzania, as they begin to work together on the translation project

Wisdom as we prepare to leave the US and fly to Tanzania in January

Provision of the extra financial support we need before we leave

Strength in the time of transition to a new country and culture again

Our website: www.everytongue.co.uk

Wycliffe US: www.wycliffe.org